

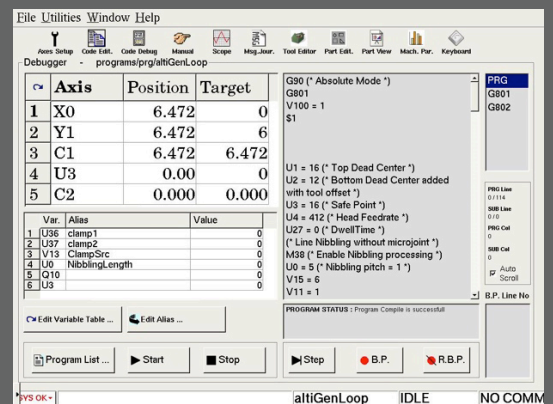
Open architecture CNC control solution for customized machine control

General features

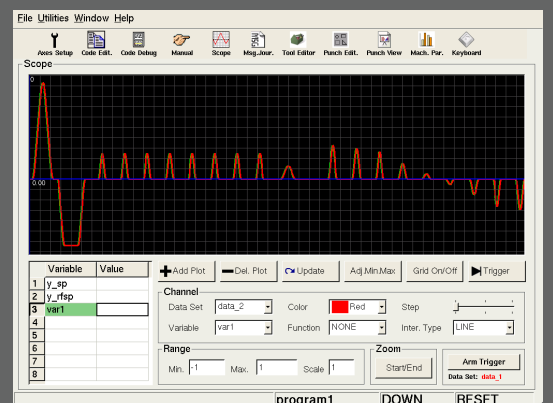
- Hydraulic & Electrical axis control interfaces
- Unlimited program size and axes number
- Extended ISO G Code motion language
- Code Editor with Debugger
- Cycle manager with Parallel cycle execution
- Multi process control with synchronisation
- Built-in PLC editor with libraries with C compiler
- Efficient debugger
- Integrated Scope & Signal analyser with pre-trigger
- Flexible I/O signal configuration
- PLC - G-Code internal communication
- Secure login and user management with user levels
- Message journal
- Advanced online help
- Multilanguage support
- Remote access

CAM import

- CAD/CAM interface with Metalix[®] and Lantek[®]
- Ethernet and USB support for part and tool transfer
- Program and part execution context import / export



ISO Code Debugger



Scope with pre-trigger

Designed and manufactured by

Hardware Characteristics

Industrial grade motherboard with:

- 2.0 GHz 4 core Atom or higher CPU
- 64 GB SDD, 8 GB RAM DDR3 1800 MHz (16-32GB optional)
- 2 x USB3.0, 2 x USB 2.0 connector
- 2 x RJ45 Ethernet 10/100/1000MHz
- 2 x PCI CAN bus port (option)
- External mouse and keyboard connection (USB or PS2)
- 1 x HDMI and 1 x VGA (1920x1080)Full-HD display port
- 19", 21", 24" Full HD monitor options
- Compatibility with capacitive and resistive touch screens
- 12 VDC power supply, 48 W low power consumption (@full load)
- Direct interface with UPS, automatic shutdown (option)
- 0°..60°C operating temperature, 1.2 kg, 47 x 230 x 186 mm (w/h/l)

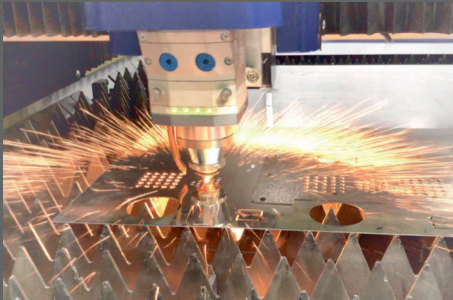


Application area

Multi-axes Machines requiring special cycle and interfaces

Based on LYNCA - BOX CNC various application has been successfully realised to Control

- Cutting, Punching Machines,
- Cartesian and 6 axes Arm Robot Control



Designed and manufactured by

Bilko[®] Automation

www.lynca.com