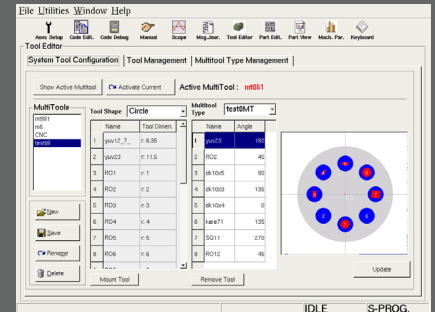


Advanced CNC control solutions for standard, rotational and turret type punch presses with integrated tool parts editor

Tool manager

- Tool programming using the built-in “Tool Editor”
- Multi-tool holder definitions with various tools and stations
- Unlimited “Toolset” and “Tool” configurations
- Tool parameters (forms, offset, type, forming/cutting, compensations, ..)
- Upper and Lower Dead Points, speed, dwell times definitions
- Management of the active toolset mounted on the machine for each part
- Security check between the mounted and requested tools

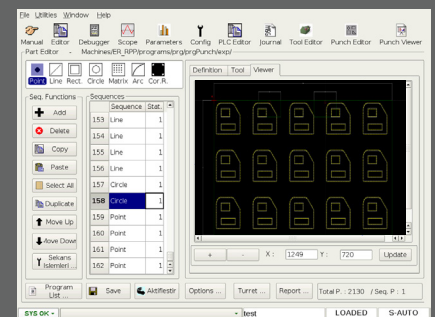


Tool editor

- Wheel & Marking tools support

Part editor

- Favourite program lists and Folder management with advanced parts & tools search
- Part programming using the pattern-based Part Editor with new part creation “Wizard”
- Pattern based sequence and part programming
- Pattern library including : Point, Line, Rectangle, Matrix, Circular, Arc punching patterns
- Special “Corner Punching” Pattern for cabinet manufacturing
- Graphical pattern translation, rotation, mirroring, copy/paste ...
- 2D Graphical cursor, pattern coordinates, pattern zoom in/out
- “Pattern Viewer” 2D graphical viewing support for pattern programming
- Punching or nibbling modes with automatic nibbling step calculation
- Various Micro-joint, Panelising, Mirroring, “Common Cut” support
- Writing support trough DXF
- Multi-clamp definitions with Automatic clamp repositioning management
- Optimal punch head selection and Optimal trajectory generation
- Manual Nesting, True shape nesting with advanced algorithms (option)
- Post Processor file editing support for code generation process
- Manual or automatic pattern execution order management
- Automatic NC code generation



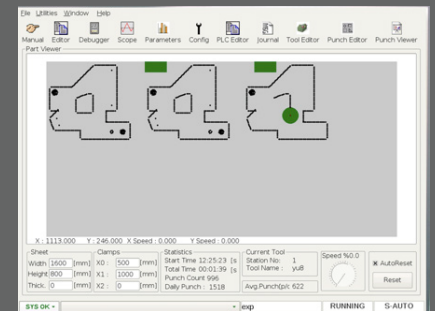
Part editor

Safe and intelligent punching

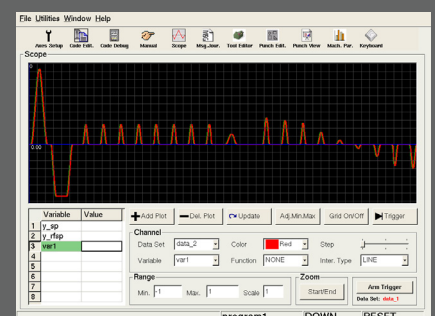
- Management of the punching head to work inside limited safety area
- Optimal Punching heads rotation when tool changes
- Scrap removal management
- Part simulation with 2D viewer
- Real-time 2D graphical supervision when execution with “Punch Viewer”

Reporting

- Production reporting based on timings, weights and tool usage
- Tool usage tracking (part based tool counting, daily tool counting etc.)
- Step mode and no-punch modes support
- Detailed machine usage data logger
- Punch Analyser for motion fine tuning



Punch viewer



Punch analysing scope

Designed and manufactured by

Bilko® Automation

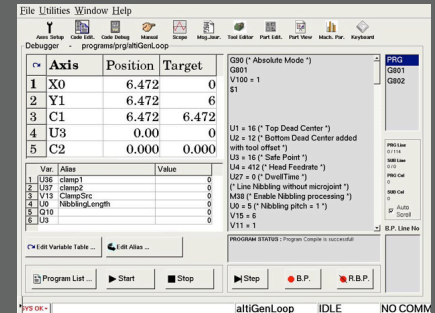
www.lynca.com

CAD/CAM import interface

- CAD/CAM interface with Metalix® and Lantek®
- Intelligent DXF part import with corrections
- Ethernet and USB support for part and tool transfer
- Program and part execution context import / export

Supported axes

- X / Y table axis drive interface
- C1 / C2 tool change axis
- External feeder/loader/unloader/shearing axis control
- LYNCA - RPC : designed for ROLL PUNCH machines



Hydraulic & electrical punch axis control interfaces

- Full range support for Voith Turbo HL® Hydraulic punch units over CanBus,
- Bosch-Rexroth® Hydraulic (HNC100) direct control
- Schneider® Hydraulic interface
- Estun® E-punch servo drive interface
- Any other new interfaces, on request

LYNCA - BOX CNC based hardware

- CANbus® / EtherCAT® / Modbus® interface
- LINUX OS
- 2.0 GHz 4 core Atom or higher CPU
- 64 GB SDD, 8 GB RAM DDR3 1800 MHz (16-32GB optional)
- 4 x USB port
- 2 x RJ45 Ethernet 10/100/1000MHz
- 2 x PCI CAN bus port
- 3 x COM Port (RS232/485/262)
- 1 x HDMI and 1 x VGA (1920x1080)
- 19", 21", 24" Full HD monitor options
- 12 VDC power supply, 48 W low power consumption (@full load)
- 0°.60°C operating temperature, 1.2 kg, 47 x 230 x 186 mm (w/h/l)

Intelligent UPS and power failure support

- Direct interface with UPS, automatic shutdown (option)
- Automatic resume from last punch after stop or power failure

General properties

- Unlimited program size
- ISO G codes editor with parallel cycles support
- Built-in Code debugger with break-points and variables displays features
- Built-in PLC editor in C language (optional)
- Integrated scope
- Flexible I/O signal configuration
- Secure login and user management with user levels
- Message journal
- Advanced online help
- Multilanguage support
- Remote access



Designed and manufactured by

Bilko® Automation

www.lynca.com